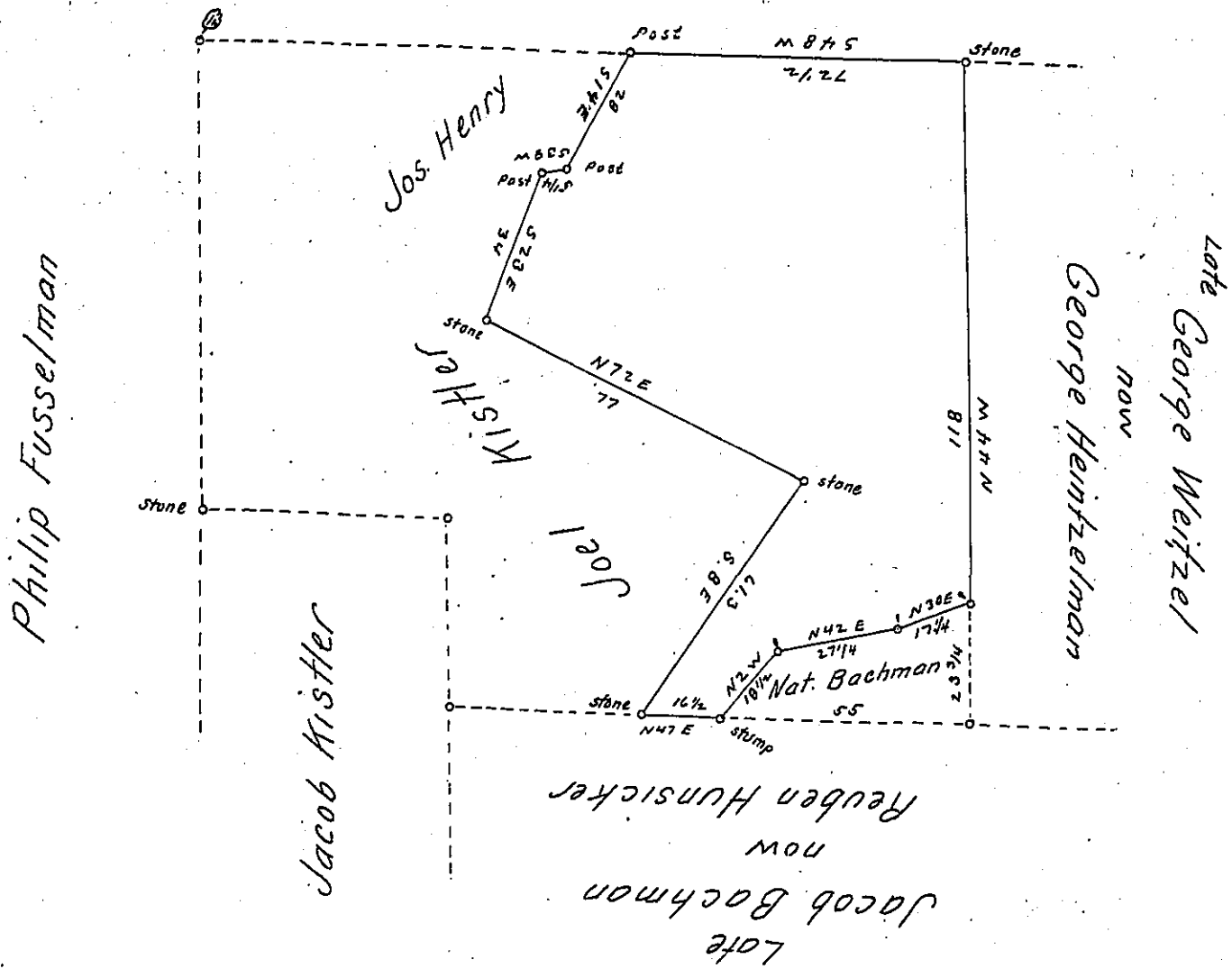


Late
Widow Delong
now
D. Everett



Draft of a tract of land situated in Lynn township in the County of Lehigh. Containing Fifty-five Acres, twenty four perches and allowance of six per cent for roads &c. Surveyed for Esais Klase & George Heintzelman the 10th day of August 1870. being a part of a larger tract of One hundred & twenty Six Acres, fifty three perches and allowance originally surveyed in pursuance of a Warrant granted to Jacob Kistler dated the 30th day of April 1806.

Geo. Blank C.S.

To J.M. Campbell Esqr.
Surveyor General

IN TESTIMONY that the above is a copy of the original remaining on file in the Department of Internal Affairs of Pennsylvania, made conformably to an Act of Assembly approved the 16th day of February, 1833, I have hereunto set my Hand and caused the Seal of said Department to be affixed at Harrisburg, this first day of July 1905.

Joseph P. Brown
Secretary of Internal Affairs.